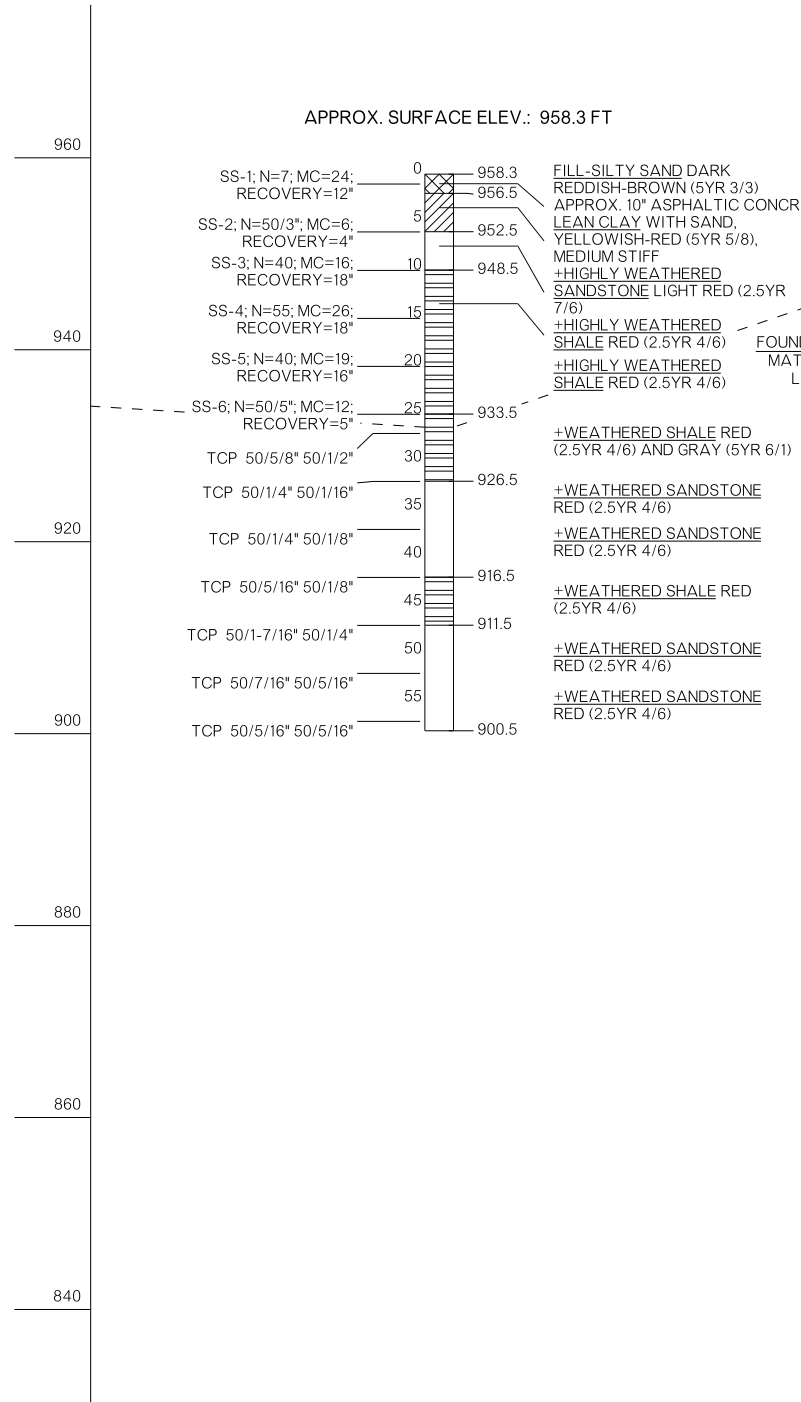


REVISIONS		
REV. NO.	DESCRIPTION	DATE

BORING NO. B-21

STA. 1556+97; OFFSET: 40 FEET LEFT OF CRL
 WATER LEVEL CHECK: N/A
 (7/28/2012)

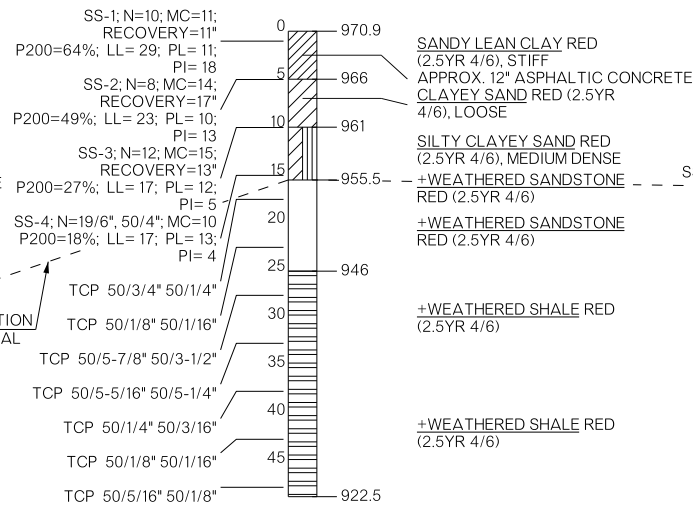
APPROX. SURFACE ELEV.: 958.3 FT



BORING NO. B-22

STA. 1559+00; OFFSET: 8 FEET RIGHT OF CRL
 WATER LEVEL CHECK: N/A
 (8/1/2012)

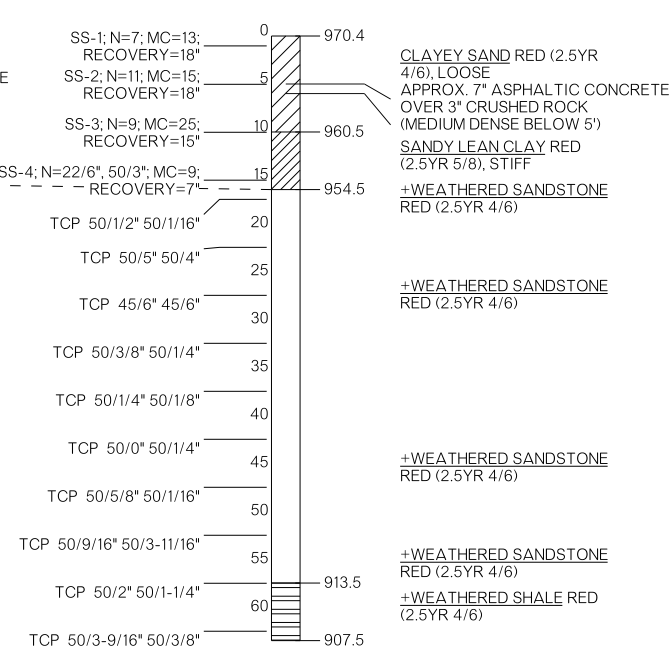
APPROX. SURFACE ELEV.: 970.9 FT



BORING NO. B-23

STA. 1559+00; OFFSET: 14 FEET LEFT OF CRL
 WATER LEVEL CHECK: N/A
 (7/28/2012)

APPROX. SURFACE ELEV.: 970.4 FT



GEOLOGICAL STATEMENT:
 THE GEOLOGY OF THIS SITE CONSISTS OF GARBER UNIT OF PERMIAN AGE. THE GARBER UNIT CONSISTS OF RED CLAY SHALES, RED SANDY SHALES, AND RED MASSIVE COMMONLY CROSS-BEDDED LENTICULAR SANDSTONES. THE UNIT VARIES IN THICKNESS FROM ABOUT 400 TO 600 FEET.

BRIDGE "A"		LOGAN COUNTY		Design	GT	11/15
SH-33 OVER COTTONWOOD CREEK				Detail	SBE	11/15
FOUNDATION REPORT				Check	JCH	11/15
(SHEET 6 OF 6)				Squad	PEARSON	
STATE OF OKLAHOMA				DEPARTMENT OF TRANSPORTATION		
JOB/PIECE NO. 21860(04)		SHEET NO. B010				